

1:20,000 RECONNAISSANCE FISH AND FISH HABITAT INVENTORY  
McBRIDE CREEK  
460-600600-63200-

UPPER MORICE RIVER PLANNING AREA  
FISHERIES / INTERPRETIVE MAP  
NORTHWOOD PULP AND TIMBER  
MORICE FOREST DISTRICT  
1999

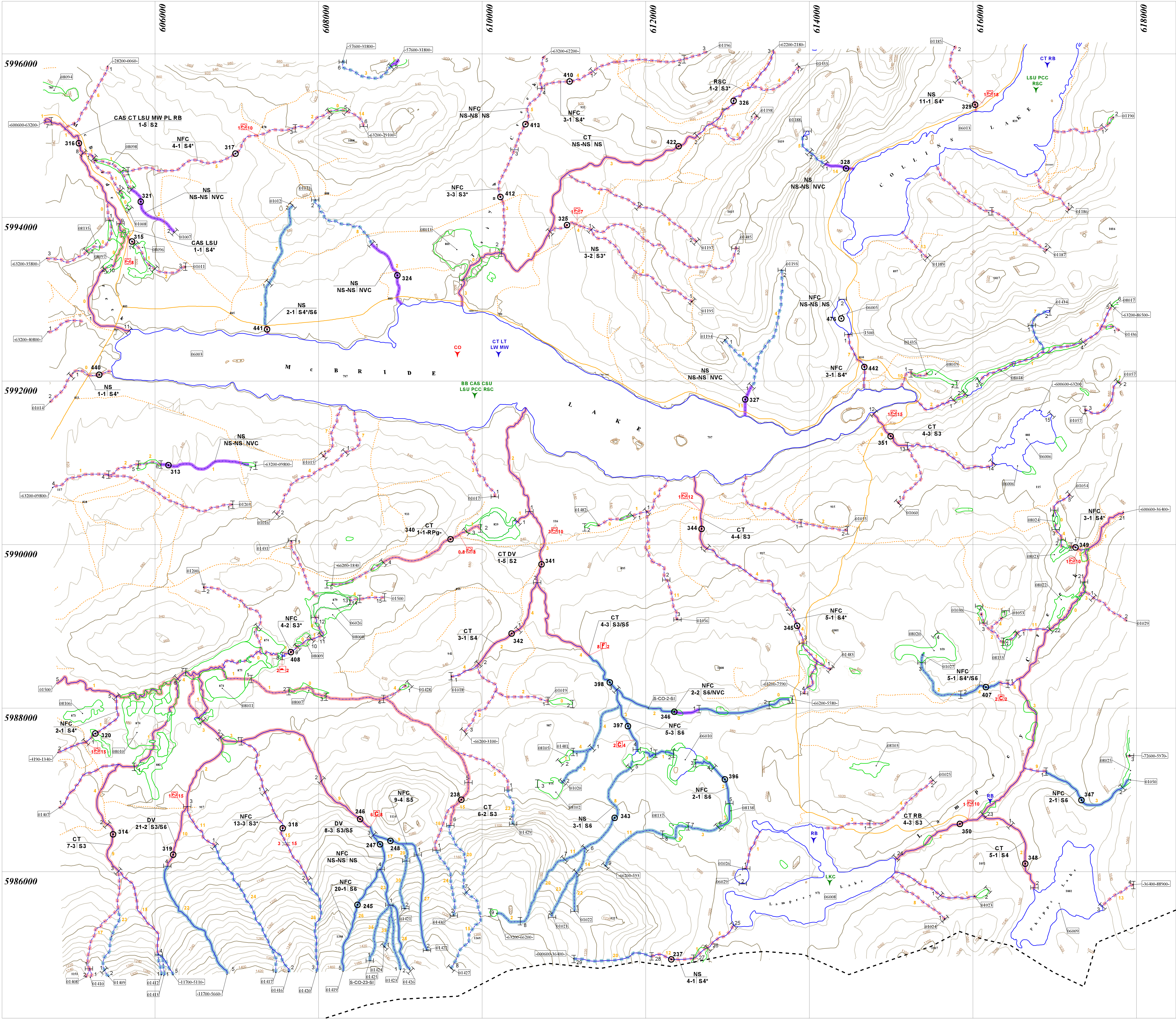
MAP SHEET # 093 L 004 Map 7 of 15

1000 0 1000 2000 Meters

Scale 1:20,000  
Contour Interval (20m) Projection UTM

Date: 2000/03/24 (yyyy/mm/dd)

Company: EL of TRITON Environmental Consultants Ltd.



STREAM INFORMATION SUMMARY

12345 Interm Location Point (ILP)  
123-123456-12345 Watershed Code

Reach Summary Symbol  
Fish Code(s)  
CO DV RB  
2-12 S2+

Channel Properties  
Channel Width  
Stream Classification

Sample Site ID  
Sample Site  
Watershed Code  
Waterbody Identifier

Lake Summary Symbol  
Lake (L) or Wetland (W)  
Surface Area  
Maximum Depth  
pH  
Conductivity  
TDS  
Lateral Area  
L-175-8.0-6.8-29-20-15  
CSU NFC NSC PCC RSC RB WSU  
Fish Code(s)

Obstructions  
Beaver Dam  
Cascades  
Culvert  
Persistent Debris Accumulation  
Dam

Features  
Eroded Bank  
Alluvial Fan  
Colluvial Fan  
Talus Cone  
Rock Outcrop  
Slumping Bank  
Slump  
Bedrock - confined  
Landslide Debris  
Landslide Area  
Boulder Garden  
Braided Stream  
Rapid  
Wetland / Marsh  
Subsurface Flow  
Tributary  
Dewatered Section  
Side Channel

Enhancement / Management Activities  
Fisheries Sensitive Zone

WSC Information  
Hydrometric station  
12AB123

Stream Classification  
Fish Present (Confirmed)  
Fish Not Present (Confirmed)  
Fish Present (Inferred)  
Fish Not Present (Inferred)  
No Visible Channel

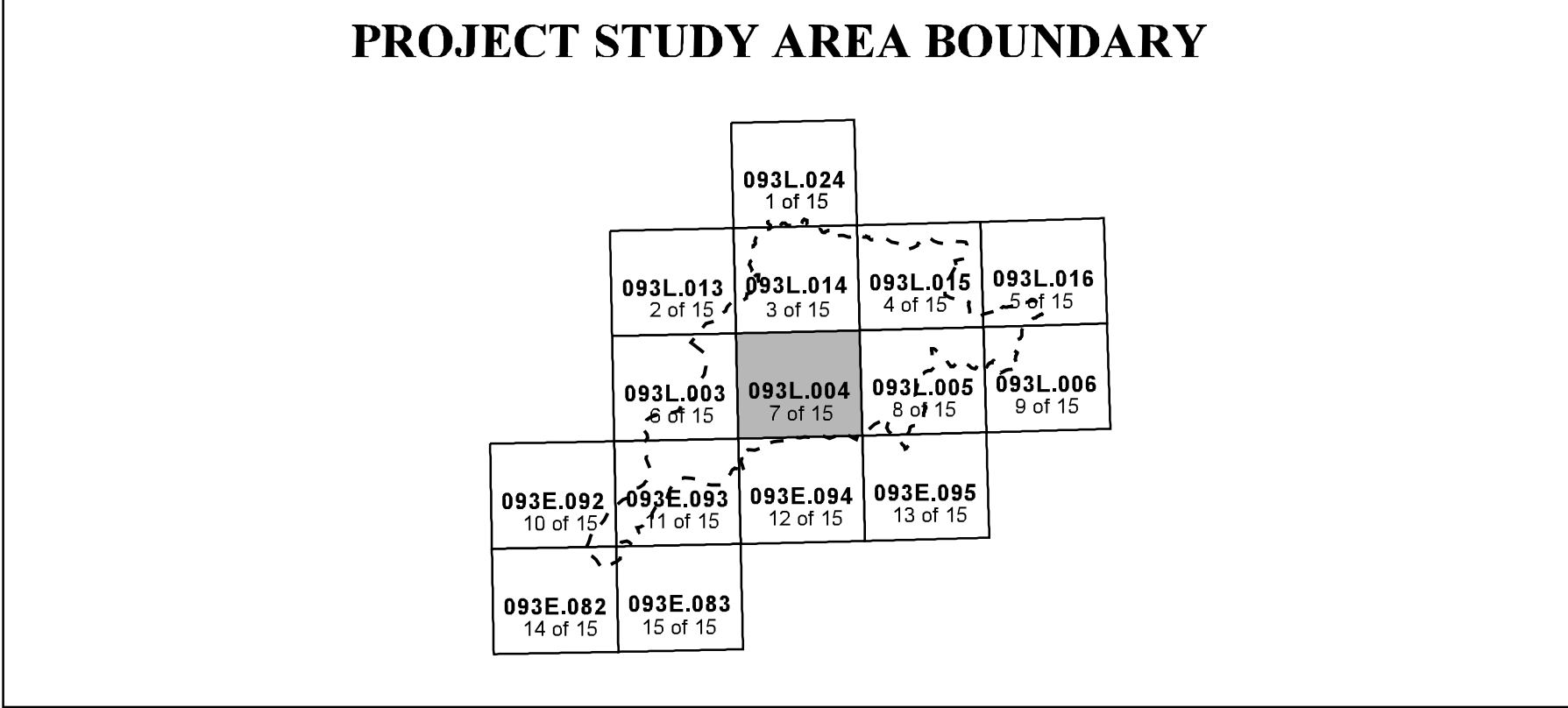
TRIM Base Map Anomalies  
Field-Identified Stream

Base Map Features  
River / Stream - intermittent  
River / Stream - intermittent  
River / Stream - indefinite  
Lake  
Lake - intermittent  
Lake - indefinite  
Marsh  
Swamp  
Glacier  
Icefield  
Sand / Gravel Bar  
Island  
Road - loose surface  
Road - rough surface  
Index Contour  
Index Contour - indefinite  
Project Boundary

NOTE: Gradients were calculated from TRIM maps during planning Phase 1 2 3 of this project

Present			Present			Historical		
CODE	DESCRIPTION		CODE	DESCRIPTION		CODE	DESCRIPTION	
NFC	No Fish Caught		LNC	Longnose Dace		Y	End of Fish Use/No Fish Use	
NS	Not Sampled		LSU	Longnose Sucker		Y	Fish Presence - Salmon	
BB	Burbot		LT	Lake Trout		Y	Fish Presence - Sport	
BT	Bull Trout		LW	Lake Whitefish		Y	Fish Presence - Regionally Significant	
CAL	Coshoctone Sculpin		MPW	Mountain Whitefish		Y	Fish Presence - Other	
CAS	Crack Sculpin		PCV	Panoramic Chub		Y	Fish Observation - Salmon	
CHI	Chinook Salmon		PL	Pacific Lamprey		Y	Fish Observation - Sport	
CO	Coho Salmon		RB	Rainbow Trout		Y	Fish Observation - Other	
CSI	Cutthroat Trout		RSC	Rainbow Shiner		Y	Fish Spawning Limit - Salmon	
CT	Cutthroat Trout		SK	Suckeye Salmon				
DV	Dolly Varden		ST	Steelhead				
L	Lamprey		SU	Sucker				
LKC	Lake Chub		WSU	White Sucker				

Source: MELP



"This product has been accepted as being in accordance with approved standards within the limits of Ministry quality assurance procedures. Users are cautioned that interpreted information on this product developed for the purposes of the Forest Practices Code Act and Regulations for example stream classifications, is subject to review by a statutory decision maker for the purposes of determining whether or not to approve an operational plan."

INVENTORY SOURCE INFORMATION CODES			
CODE	DESCRIPTION	CODE	DESCRIPTION
BASE	Base Map	LE SYM	Lake Symbol
TRIM	1:20,000 TRIM Maps	RNV	Field Inventory
NTS	1:50,000 NTS Maps	SS	Summary
OTH	Other Map Source	N/A	Not Applicable
STR SYM	Stream Symbol	OTH	Other
INV	Field Inventory	LOC	Location Information
SS	Summary	PDE	Field Estimate
N/A	Not Applicable	PDO	Field GPS
OTH	Other	APE	Aerial Photo Estimate

FOREST PRACTICES CODE RIPARIAN CLASSES (STREAM CLASSIFICATION)				
Riparian Class	Average Channel Width (m)	Reserve Zone Width (m)	Management Zone Width (m)	Total RMA Width (m)
S1 Large River	> 100	0	100	100
S2	> 5 < 20	10	20	50
S3	1.5 < 5	20	30	40
S4	< 1.5	0	30	30
S5	< 3	0	30	30
S6	< 3	0	20	20

BASE MAP INFORMATION

Projection: UTM

Datum: NAD83

UTM Zone: 9

INVENTORY SOURCE INFORMATION

BASE: TRIM

LOC: FDG

HAB: INV

DATE INV: 1998/08/23

STR SYM: INV

LK SYM: N/A

FISH: INV

INV MGNT: MELP